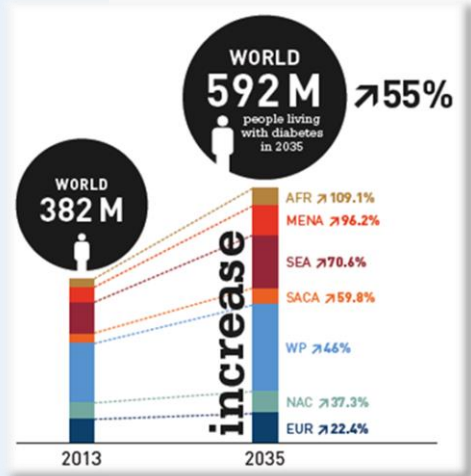
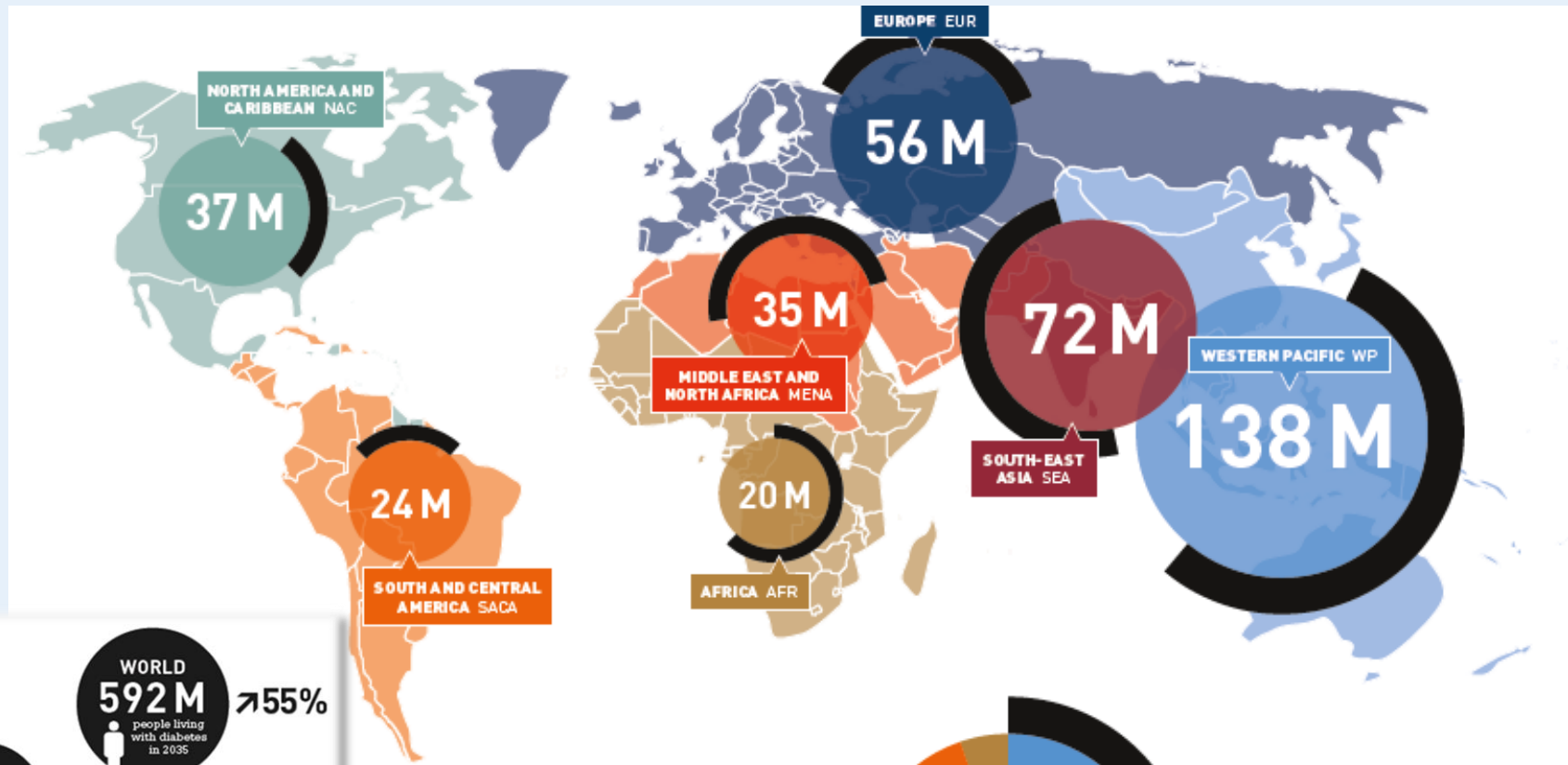
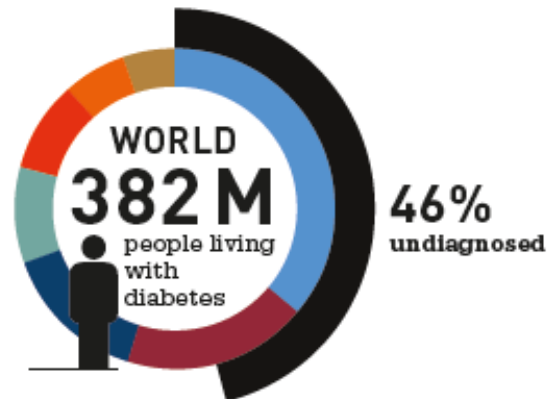


Diabetes Is A Growing Challenge



Diabetes is a **huge and growing problem**, and the costs to society are high and escalating.



Joslin Diabetes Center

Joslin's Mission: To prevent, treat and cure diabetes.

Joslin's Vision: A world free of diabetes and its complications

Joslin Diabetes Center: In a Unique position to make a difference

- Founded by Elliott P. Joslin in 1898
- Devoted to a single disease
- Largest and a renowned source of clinical care, research and outreach for patients with diabetes in the world.
- Organized- to enhance benefits to people with diabetes
- A home away from home when you enter through our doors
- Academic affiliate of Harvard
- Growing rapidly to meet the needs.



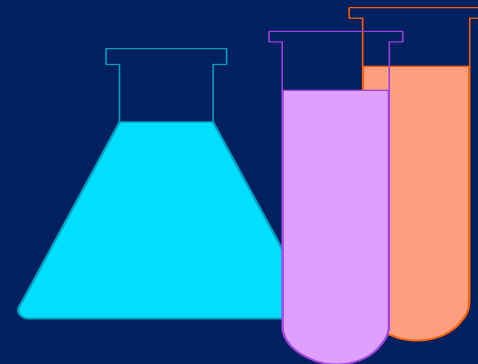
Joslin is structured to maximize benefit

Joslin Clinic

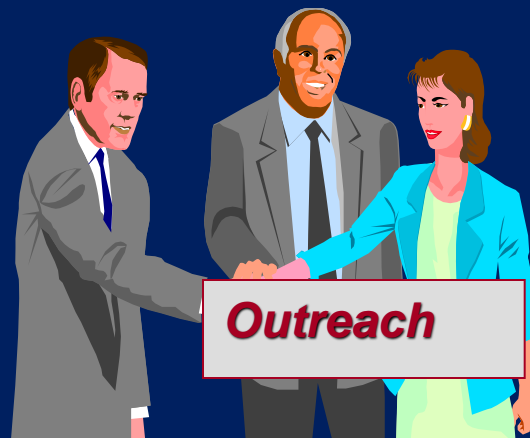


Joslin Research

Discovery



Joslin Strategic Initiatives



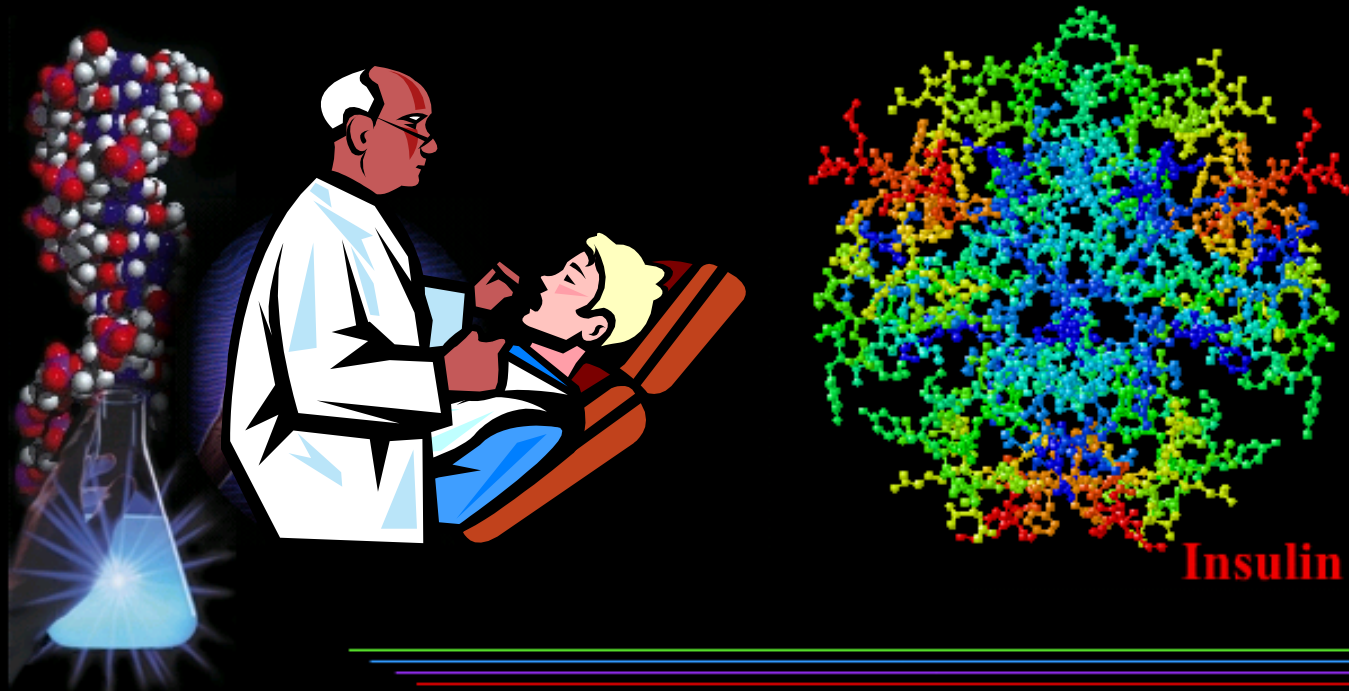
Joslin's Global Reach



0212

Joslin Research

From bench to bedside

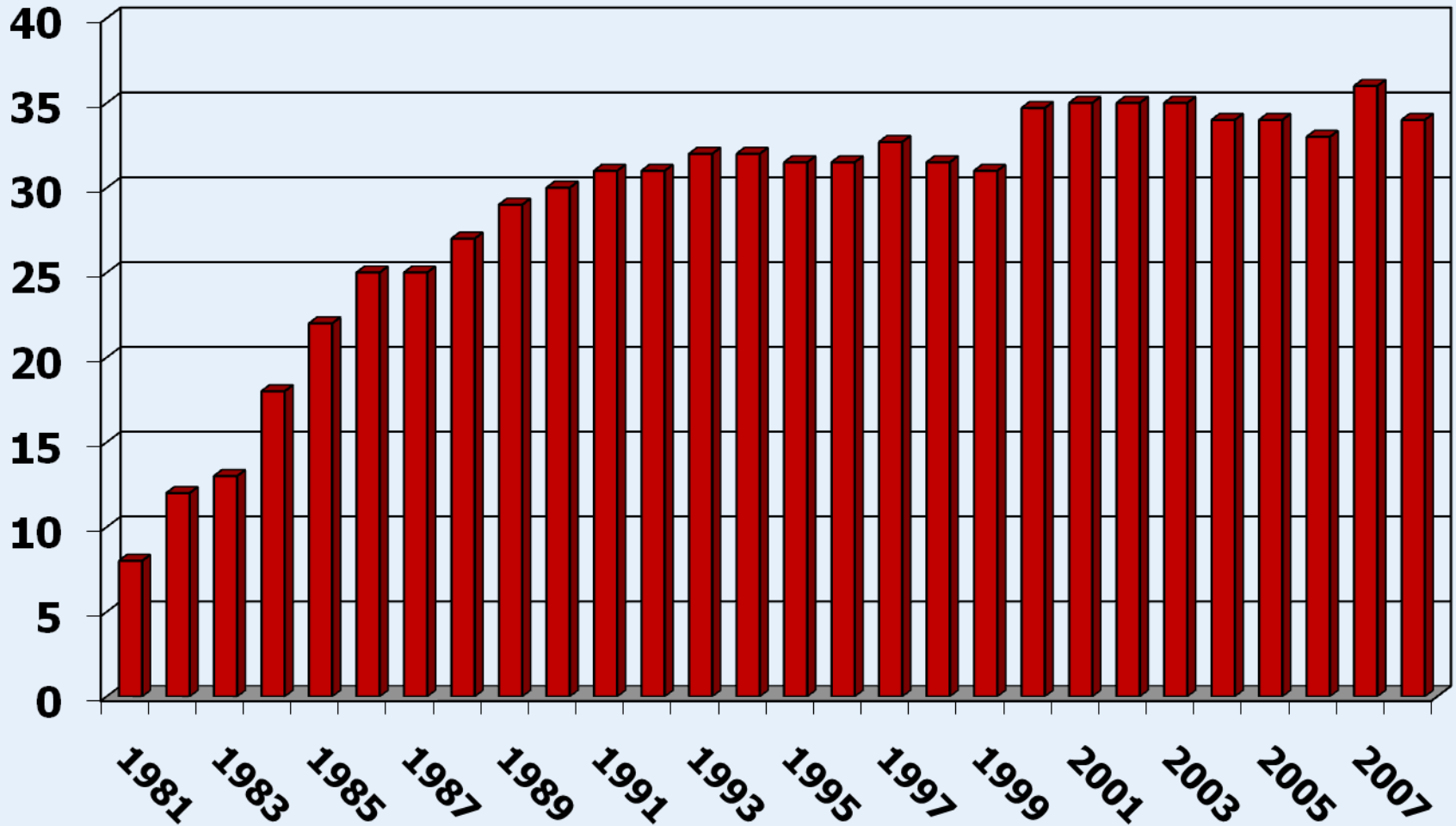




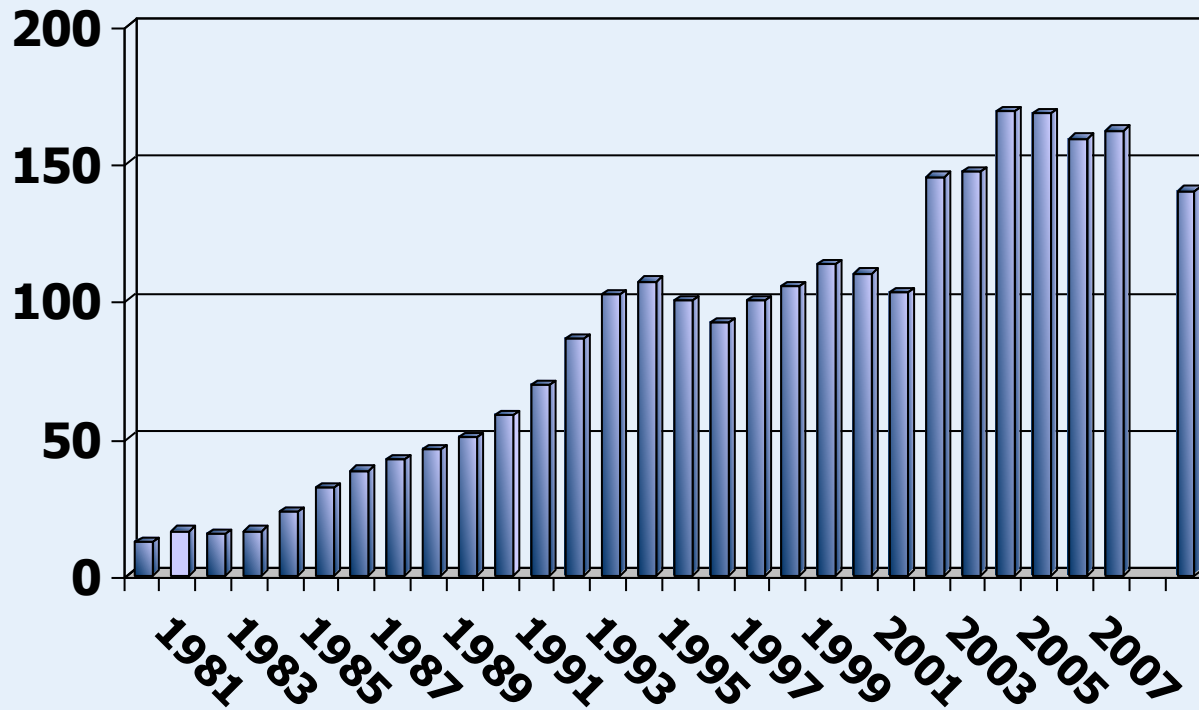
Joslin Research Sections

- Clinical, Behavioral & Outcomes Research**
- Pathophysiology & Molecular Pharmacology**
- Integrative Physiology & Metabolism**
- Genetics & Epidemiology**
- Immunobiology**
- Islet Cell & Regenerative Biology**
- Vascular Cell Biology**

Joslin Research Faculty



Research Fellows, Research Associates, & Visiting Scientists



Analysis of Impact of Joslin Publications Compared to Institutions Worldwide by Sciemagoir

